

NAPOLI

ZIPPED MOTO JACKET WITH LONG SLEEVES

BEFORE YOU BEGIN

KIT DE SURVIE

(survival kit)

NEVER FORGET THAT DURING
THIS ADVENTURE YOUR SURVIVAL
DEPENDS ON YOUR KIT.

- **Fabric** in 140 cm, 55" wide : 180 cm,
72"

- **Lining** in 140 cm, 55" wide : 130 cm,
52"

- **Separating zipper** : 45 cm, 18"

- **2 snap buttons**

- **Tricot fusible interfacing** (for example
H609 Vlieseline, Pellon Ek130) : 30 cm
x 60 cm, 12" x 24"

*Many fabrics can suit this model :
tweed, various woolens, jeans, jacquard,*

faux leather...

*It's up to you! Weight: 350/500gr, above
10 oz.*

Tutorial :



*NB: the seam allowances are 1 cm, 3/8",
the hem allowances are 4 cm, 1 9/16",
these seam allowances are included in
the patterns.*

Mesures du corps / Body measurements								
Taille	34	36	38	40	42	44	46	48
Poitrine	80	84	88	92	96	100	104	108
Taille	60	64	68	72	76	80	84	88
Bassin	86	90	94	98	102	106	110	114
Stature	165	165	165	165	165	165	165	165
Size US/UK	2/6	4/8	6/10	8/12	10/14	12/16	14/18	16/20
<i>Bust</i>	32,0"	33,6"	35,2"	36,8"	38,4"	40,0"	41,6"	43,2"
<i>Waist</i>	24,0"	25,6"	27,2"	28,8"	30,4"	32,0"	33,6"	35,2"
<i>Hips</i>	34,4"	36,0"	37,6"	39,2"	40,8"	42,4"	44,0"	45,6"
<i>Height</i>	66,0"	66,0"	66,0"	66,0"	66,0"	66,0"	66,0"	66,0"

Vêtement fini / Garment measurements								
Taille	34	36	38	40	42	44	46	48
Poitrine	95	99	103	107	111	115	119	123
Taille	89	93	97	101	105	109	113	117
Biceps	32	33	34	35	36	37	38	39
Encolure dos / bas de vêtement	46,8	47,3	47,8	48,3	48,8	49,3	49,8	50,3
Encolure dos / bas de manche	79,0	80,0	81,0	82,0	83,0	84,0	85,0	86,0
Size US/UK	2/6	4/8	6/10	8/12	10/14	12/16	14/18	16/20
<i>Bust</i>	38,2"	39,8"	41,4"	43,0"	44,6"	46,2"	47,8"	49,4"
<i>Waist</i>	35,4"	37,0"	38,6"	40,2"	41,8"	43,4"	45,0"	46,6"
<i>Biceps</i>	12,8"	13,2"	13,6"	14,0"	14,4"	14,8"	15,2"	15,6"
<i>Length back neckline to bottom of the jacket</i>	18,7"	18,9"	19,1"	19,3"	19,5"	19,7"	19,9"	20,1"
<i>Length back neckline to the bottom of the sleeve</i>	31,6"	32,0"	32,4"	32,8"	33,2"	33,6"	34,0"	34,4"

In general, realize the size you usually buy.

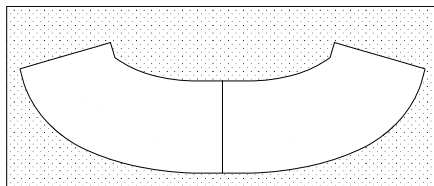
NB: the seam allowances are 1 cm, 3/8", these seam allowances are included in the patterns.

Before you cut your fabric, you must press it with a steam iron or even better wash it so that you don't have any nasty surprises.

When your fabric is pressed, fold it, with right sides facing, lengthways. Place the pattern pieces as indicated on the cutting diagram. Trace around each piece with a tracing pen Pilot Roller Ball Frixion® (this can be removed with an iron). Take off the pattern pieces and cut the fabric with a pair of scissors only used for cutting fabric.

The notches are little marks to help you to assemble various pieces, a bit like a puzzle. When you cut each piece, give a little snip on the marks, perpendicularly to the cut (max 0,5 cm, 3/16").

Interfacing a piece keeps the fabric from deforming. If you interface certain pieces (eg: collars, waistband) keep a rectangle of fabric the size of the piece that needs to be interfaced. Press your fusible interfacing on the wrong side of the rectangle then cut.



Choose knit fusible interfacing, it will be less likely to modify the quality of the fabric

When all the pieces are cut, you can now start to sew.

Sewing is a game of patience and precision so don't forget your notches when assembling.
Good luck !

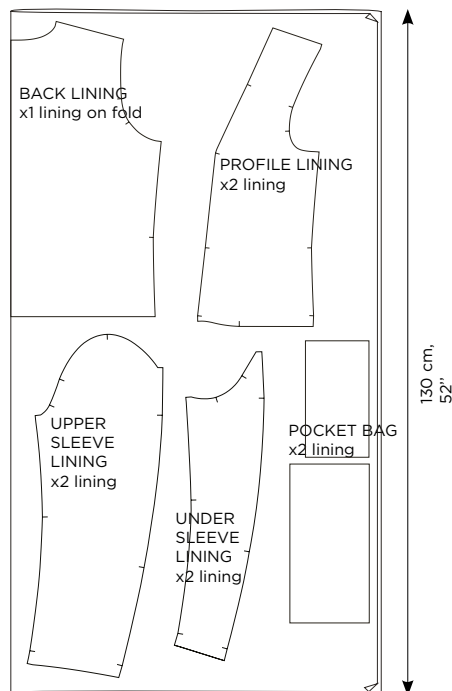
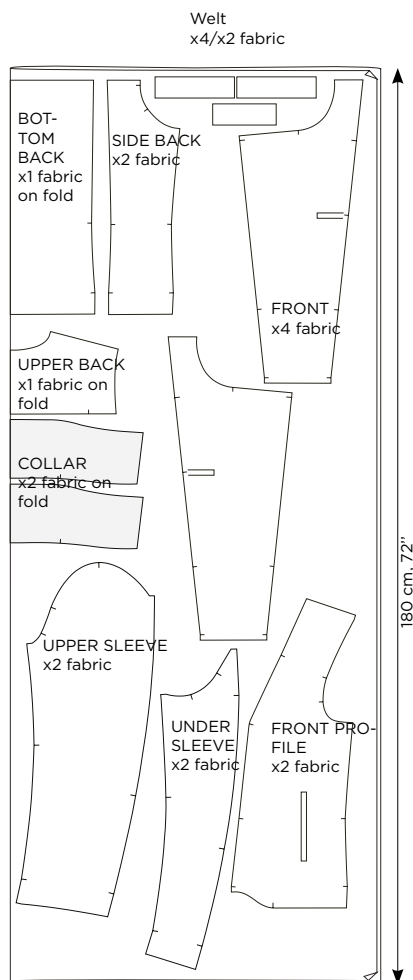
BON COURAGE !

(Good luck !)

CUTTING DIAGRAMS

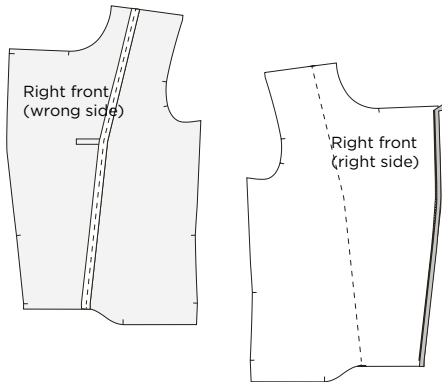
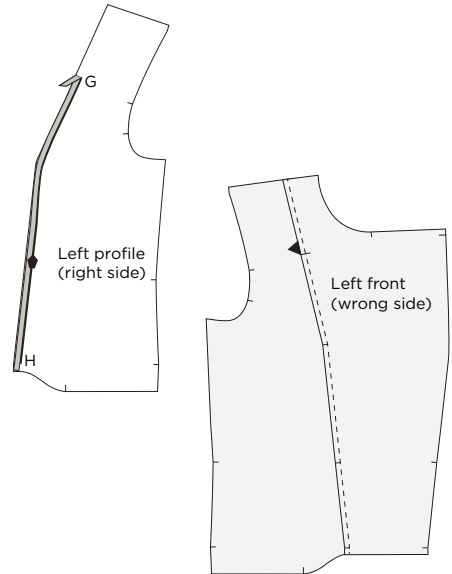
Fabric in 140 cm, 55" wide

Interfacing



1 - THE SEPARATING ZIPPER

1. On the right side of the left profile, stitch the zipper, with right sides facing, precisely between notches G & H. Above G, fold the zipper tape outward. Carrefully place the bottom stopper of the zipper right above notch H.
2. Stitch, with right sides facing, the left front to the left profile, along the zipper.
3. Lay the seam allowance toward the profile and topstitch at 2 mm, 1/16".



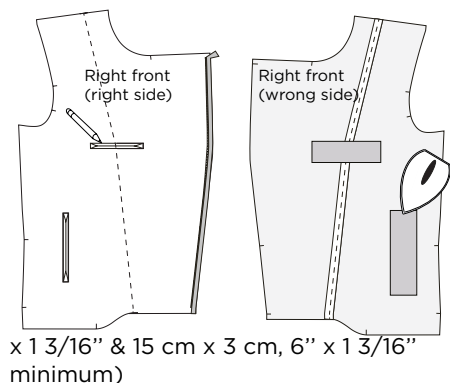
1. Stitch, with right sides facing, the right front to the right profile, along the princess seam. Press seam flat.
2. Stitch, with right sides facing, the other side of the zipper along the right front.

2 - THE SIMPLE WELT POCKETS

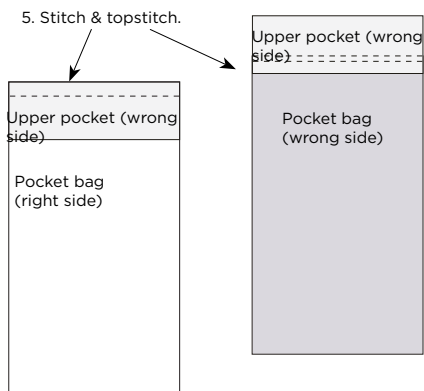
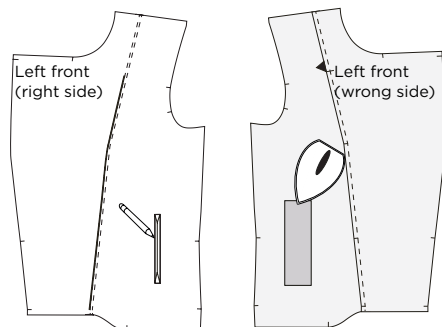
Tutorial : <https://youtu.be/ypDr5FK3r4s>



1. On the right side of the right front, trace the pockets.
Breast pocket : 10 cm x 1 cm, 4" x 3/8".
Side pocket : 13 cm x 1 cm, 5,2" x 3/8".
2. On the wrong side of the right front, at the pocket placement, press an interfacing strip (12 cm x 3 cm, 4,8"

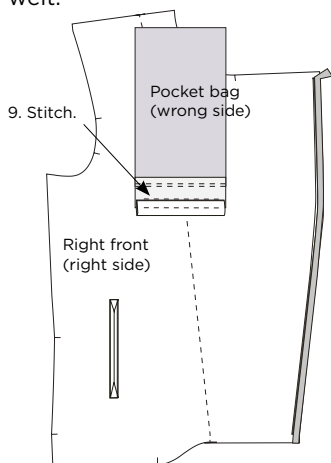
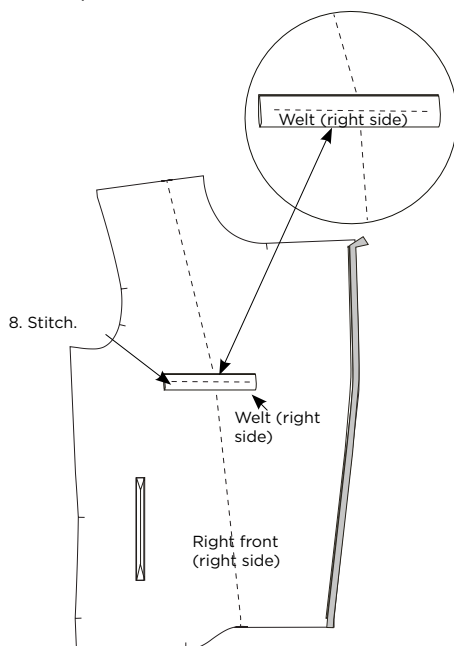


3. On the right side of the left front, trace the side pocket : 13 cm x 1 cm, 3/8".
4. On the wrong side of the left front, at the pocket placement, press an interfacing strip (15 cm x 3 cm, 6" x 1 3/16" minimum)

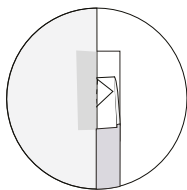
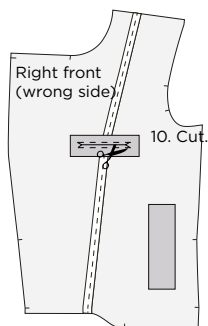


5. Stitch, with right sides facing, the upper pocket to the pocket bag. Lay the seam allowance toward the lining and topstitch at 2 mm, 1/16".

6. Fold the welt with wrong sides facing lengthwise and press.
7. On the right side of the right front, place the welt along the upper part of the breast pocket opening.
8. Stitch at 1 cm, 3/8" from the edge and stop at 1 cm, 3/8" from the side of the welt.



9. Place the aggregate (upper pocket + pocket bag), below the welt, with right sides facing. Stitch at 1 cm, 3/8" from the edge and stop at 1 cm, 3/8" from the side of the welt.

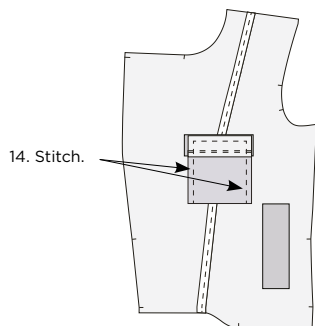
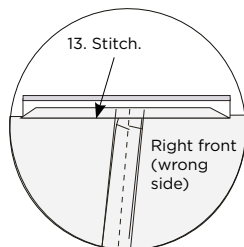
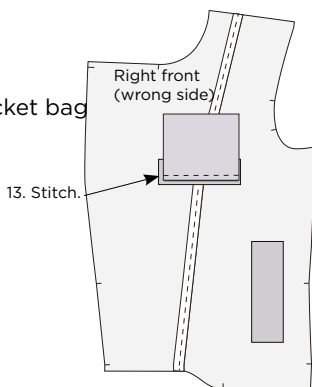


10. Cut the pocket opening. Stop exactly at the extremities of the seams while cutting a Y.

11. Fold the pocket bag and the welt over to the wrong side of the front. Fold also the small triangles of the pocket opening.

12. Press.

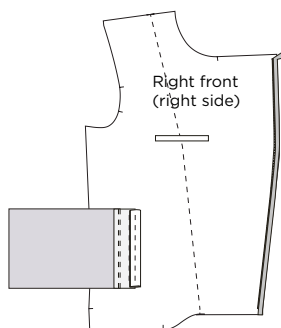
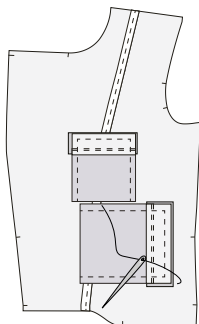
13. Stitch the bottom of the pocket bag to the welt.



14. Stitch the sides of the pocket bag, with right sides facing. Stitch also the small triangles.

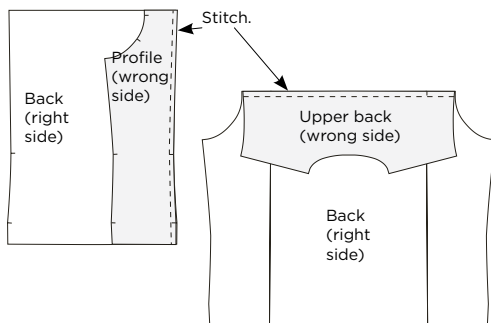
15. Repeat the steps 3 to 14 with the side pockets on the right and left fronts.

Place the welt toward the front edge and the pocket bag toward the side of the jacket.



16. With a few hand stitches, secure the upper part of the side pockets to the seam allowance of the strap cuts.

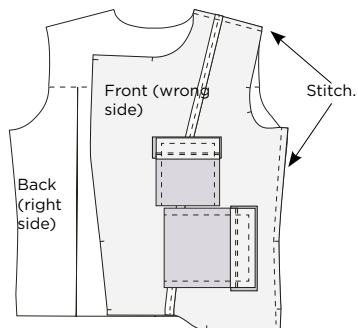
3 - THE BODY



3. Stitch, with right sides facing, the fronts to the back along the shoulder and the side seams. Press seams flat or lay the seam allowances toward the back and topstitch.

1. Stitch, with right sides facing, the profiles to the back. Press seams flat or lay the seam allowances toward the side and topstitch.

2. Stitch, with right sides facing, the upper back to the back. Press seams flat or lay the seam allowances toward the bottom of the jacket and topstitch.



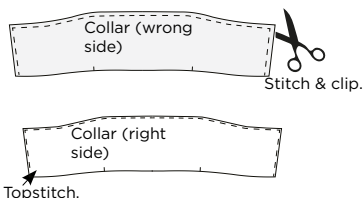
4 - THE COLLAR

1. Stitch, with right sides facing, the two layers of collar.

2. Trim the angles.

3. Fold over to the right side.

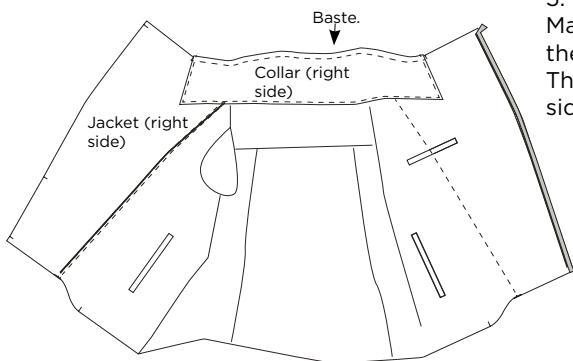
4. Topstitch the outer edge of the collar at 2 mm, 1/16".



5. Baste the collar to the neckline.

Match the extremities of the collar with the center front notches.

The under collar is against the right side of the jacket.

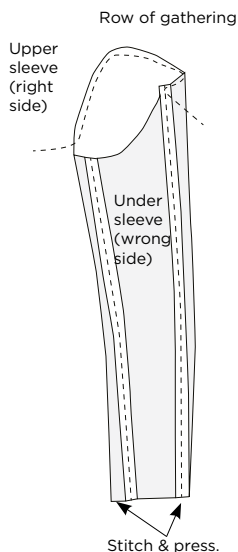


5 - THE SLEEVES

Tutorial : <https://youtu.be/sWJ1L5vxqbo>

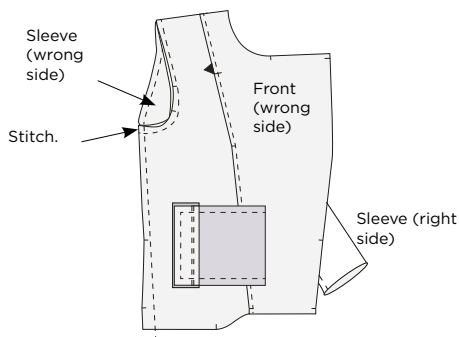


1. Stitch the under sleeve to the upper sleeve along the elbow and the inseam.
2. Along the sleeve cap, stitch a row of gathering. For that : Extend the stitch length of your machine to the maximum and stitch at 8 mm, 3/10" from the edge between notches A & D. Pull the bobbin threads. Distribute gathers evenly.
3. Press seams flat.



4. To attach the sleeves to the body of the jacket, turn the sleeves right side out. Insert each sleeve in the body of the jacket.

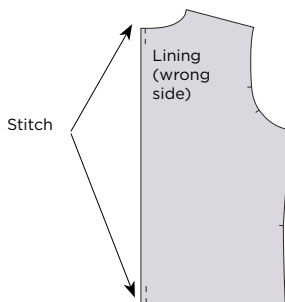
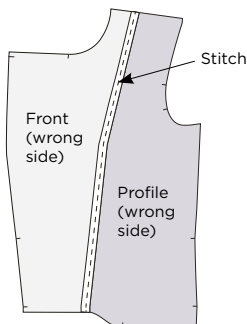
Pin the sleeve to the body, with right sides facing, matching the notches. Stitch all around the armhole.



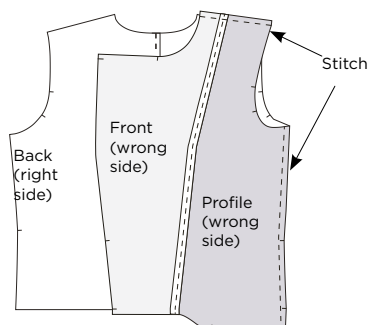
6 - THE INNER BODY

1. Fold the back lining in half, with right sides facing, then stitch vertically on 3 cm, 9/8" at 1 cm, 3/8" from the center back to create a pleat of ease at the neckline.

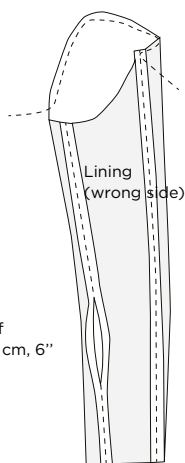
Do the same on the bottom of the lining.



2. Stitch the fronts to the front profiles along the princess seam, with right sides facing. Press seams flat.



3. Stitch, with right sides facing, the fronts to the back lining along the shoulder and the side seams. Press seams flat..



opening of
approx. 15 cm, 6"

4. Attach the sleeves in lining in the same way as the jacket sleeves, leaving a 15 cm, 6" opening on one of the inseams.

To attach the sleeves to the body in lining, turn the sleeves right side out, as for the main body.

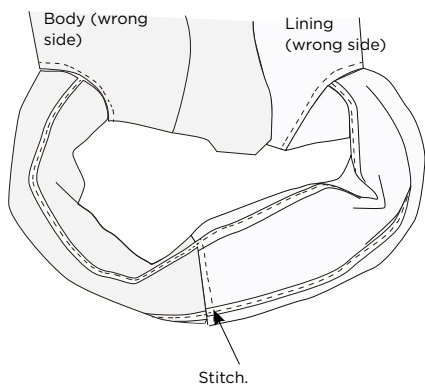
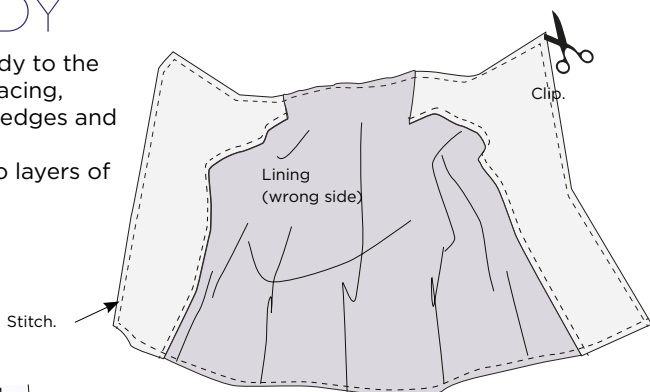
Insert each sleeve into the jacket body. Pin the sleeves to the body, with right sides facing, matching notches. Stitch all around the armholes.

7 – THE INNER BODY WITH THE OUTER BODY

1. Pin and stitch the outer body to the inner body, with right sides facing, along the neckline, the front edges and the bottom of the jacket.

The collar is between the two layers of the body.

2. Clip the angles.



3. Make a circle with the main sleeves and the sleeves in lining. Match the elbow seams and the inseams.

Pin and stitch, with right sides facing, along the bottom of the sleeves.

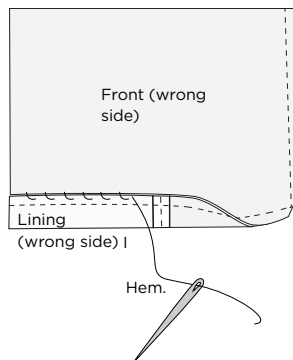
4. Turn up the hem allowance by 4 cm, 1 9/16 " toward the wrong side of the jacket.

Between the I notches, hem with invisible hand stitches.

Do not hem between I & the front edge. This part should place correctly by itself when you turn the jacket the right way out.

You can also use a double-sided iron-on hem tape.

Also hem the bottom of the sleeves folding the hem allowance toward the wrong side of the sleeves. Secure the hems with invisible hand stitches.



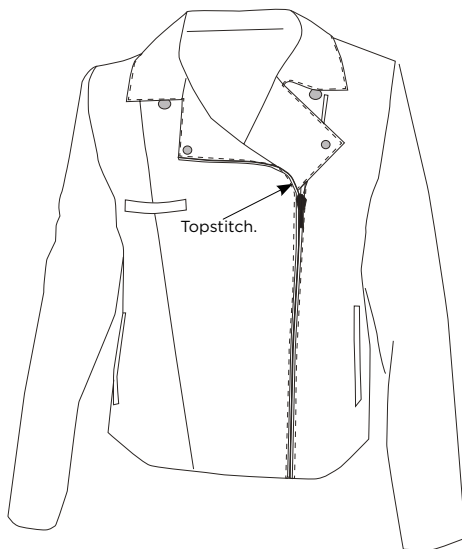
6. Fold the jacket over to the right side through the opening.
Close the opening in the lining sleeve with a few stitches.

7. Topstitch at 2 mm, 1/16" the front edges from the junction between the collar and the lapel to the bottom of the jacket .

8. Close the zipper. Place the lapels flat and attach the snaps at the corners of the lapels.

Now give it a good press and your jacket is ready to be worn.

Congrats!



contact@coralie-bijasson.com
#CoralieBijasson
@coraliebijasson
www.coralie-bijasson.com