

DÉCLIC femme / women

----- 34 eur / 4 us / 6 uk

----- 36 eur / 6 us / 8 uk

----- 38 eur / 8 us / 10 uk

----- 40 eur / 10 us / 12 uk

----- 42 eur / 12 us / 14 uk

----- 44 eur / 14 us / 16 uk

----- 46 eur / 16 us / 18 uk

----- 48 eur / 18 us / 20 uk

----- 50 eur / 20 us / 22 uk

----- 52 eur / 22 us / 24 uk

----- Toutes tailles / all sizes

┆<sup>ou</sup>  
or ┆ cran / notch

┆  
┆  
┆ couper au pli  
┆ cut on fold

→ droit fil / grainline

Marges de couture INCLUSES (cf plan de coupe)

Seam allowances INCLUDED (see cutting layout)

Ce patron est strictement réservé à l'usage personnel des clients de l'Atelier Scämmit. Il est protégé par le droit d'auteur.

Merci de respecter le travail de votre créatrice.

This pattern is strictly for personal use by customers of Atelier Scämmit. It is protected by copyright. Thank you for respecting your designer's work.

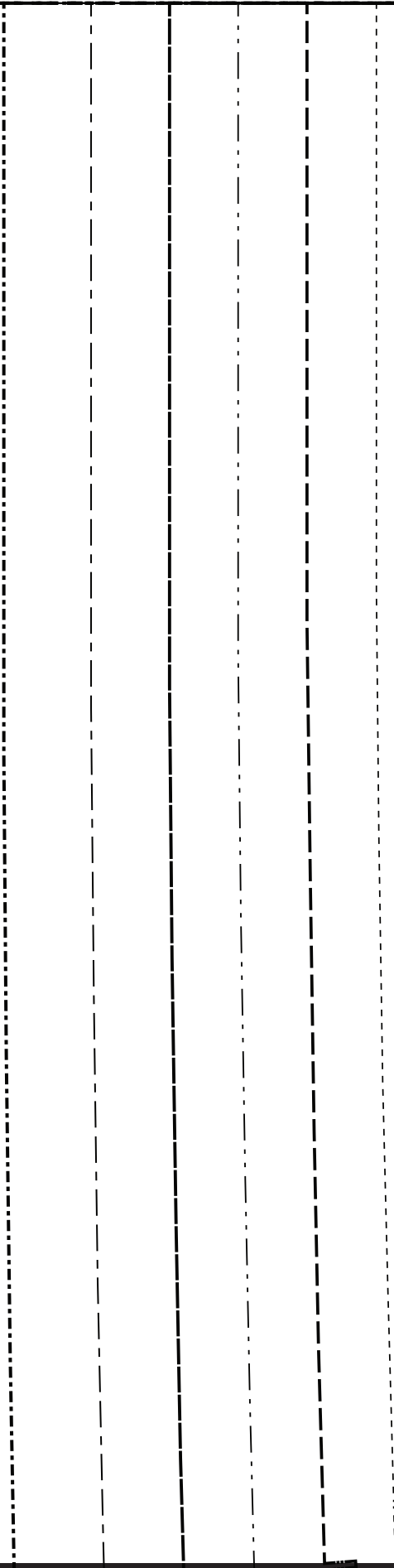
Carré test  
5 cm x 5 cm  
Test Square  
1.97" x 1.97"

1A

1B

2

2B



pli / Cut on fold

Droit fil

1B

1C



2C

11

34

36

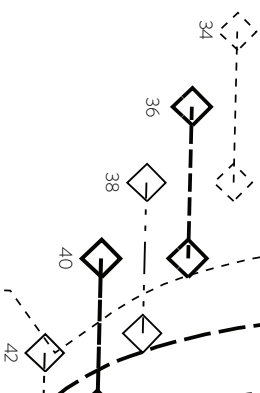
1D

# DÉCLIC

## Dos / Back

1 x tissu au pli / fabric on fold

(34) (36) (38) (40) (42) (44) (46) (48) (50) (52)

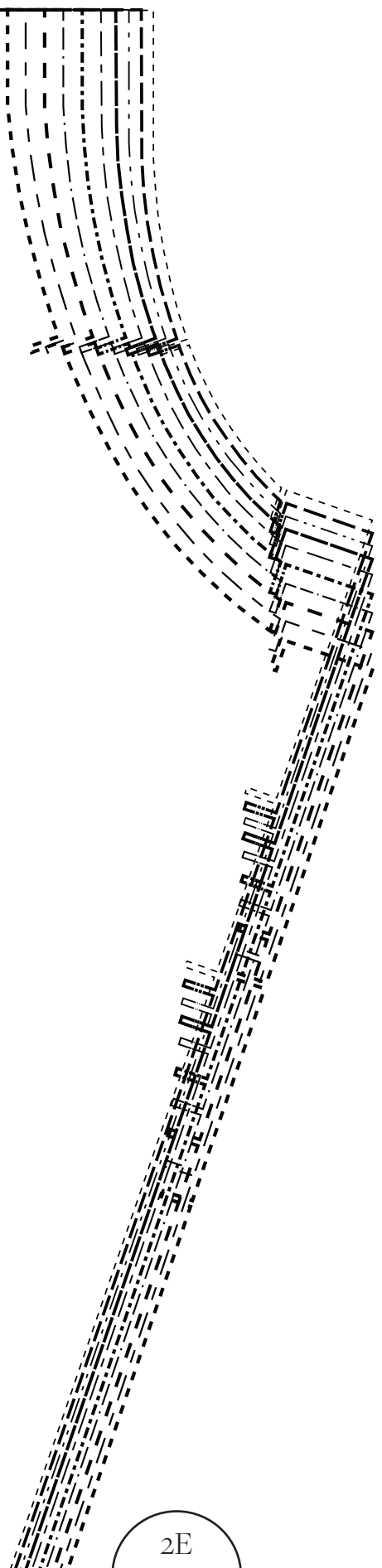


2D

Grainline

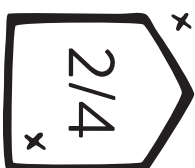
Couper au

1C



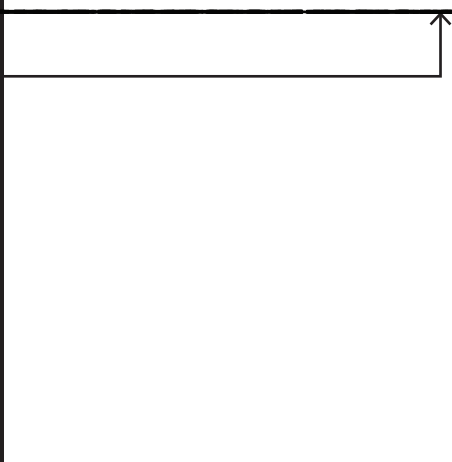
5

ATELIER  
*Scammitt*



1D

2E



2A

ATELIER  
*Scammit*



# DÉCLIC

Parementure devant /  
Front facing

1 x tissu au pli /  
fabric on fold

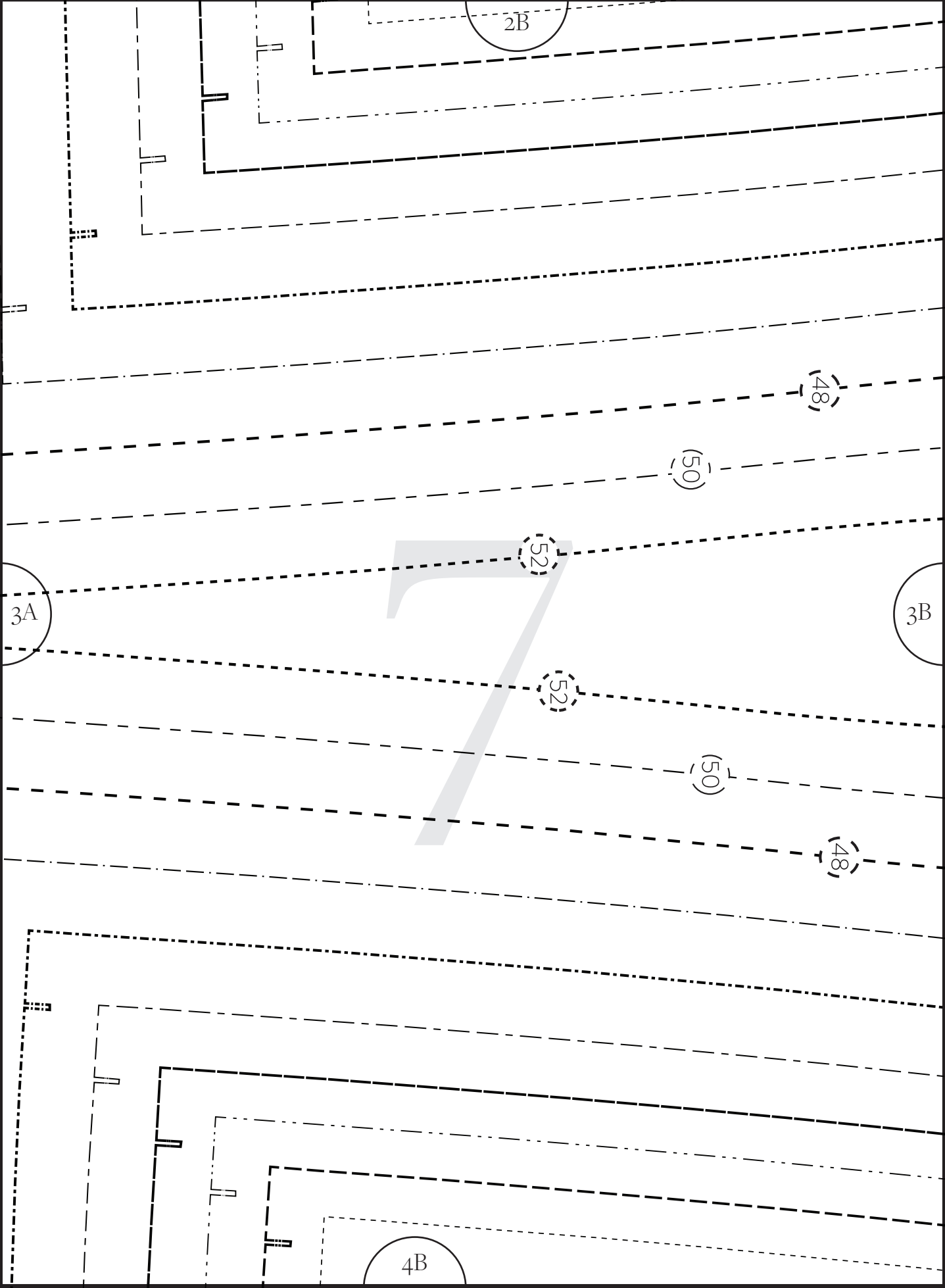
1 x thermo au pli /  
fusible interfacing  
on fold



Droit fil / Grainline

3A

4A



2B

(48)

(50)

(52)

3A

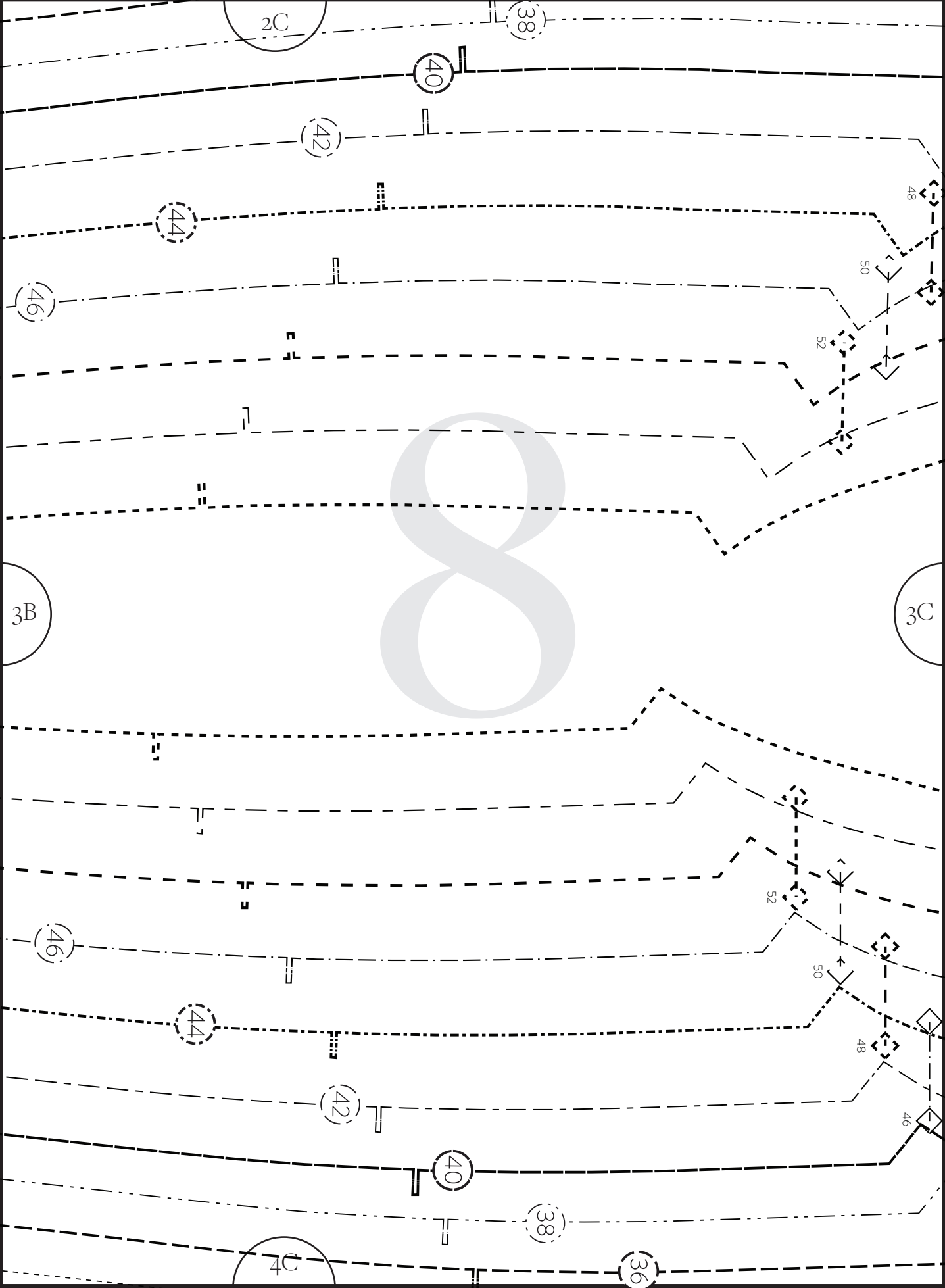
3B

(52)

(50)

(48)

4B





2D



46



44



3C



3D



4D



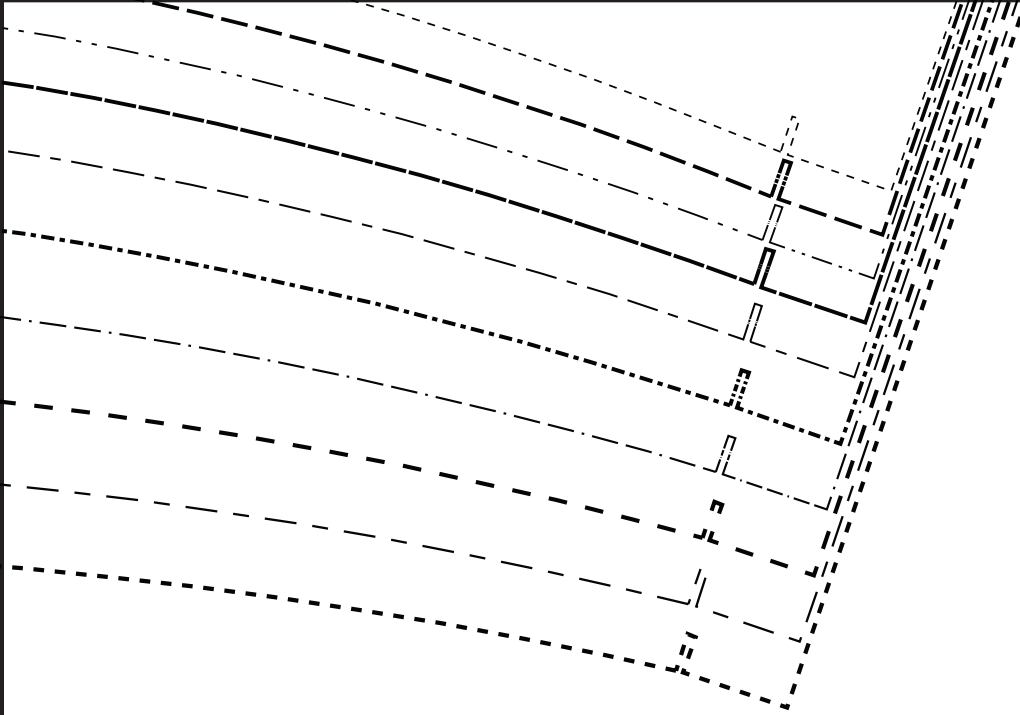
42



44

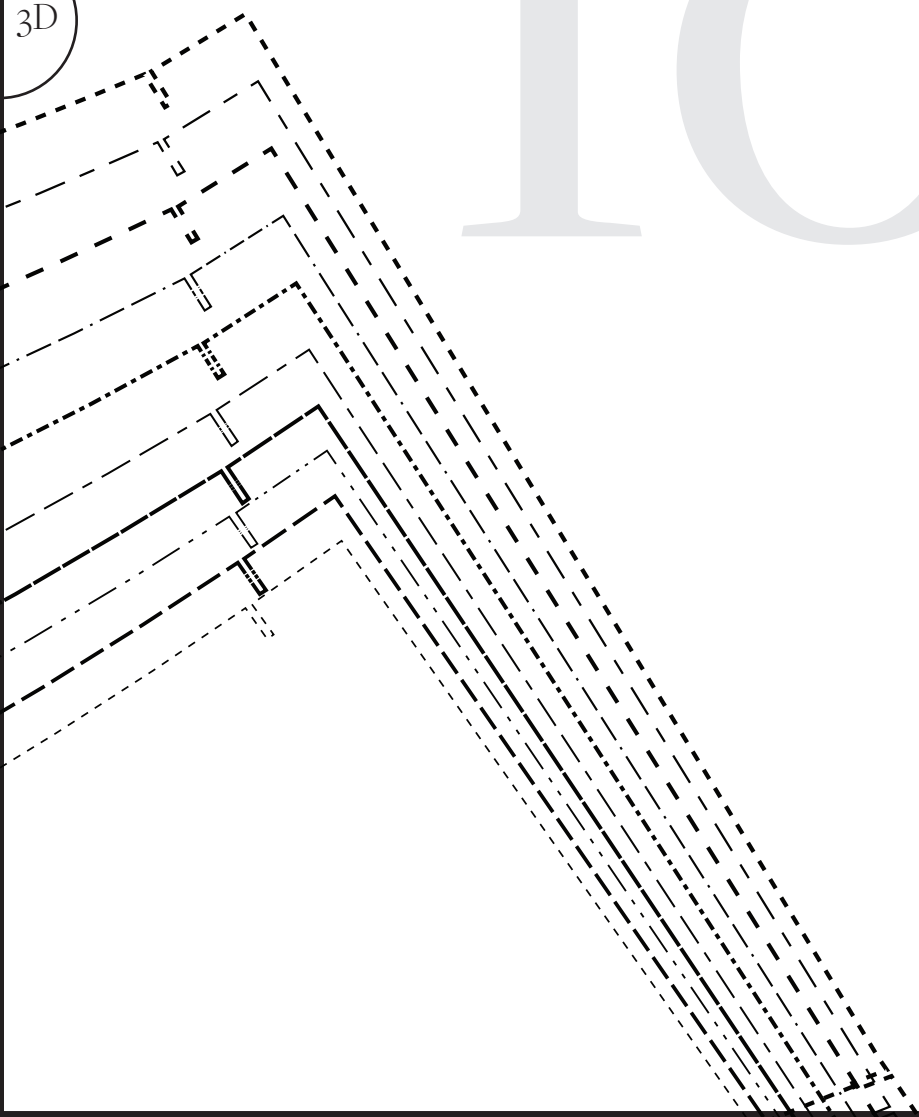


2E



# 10

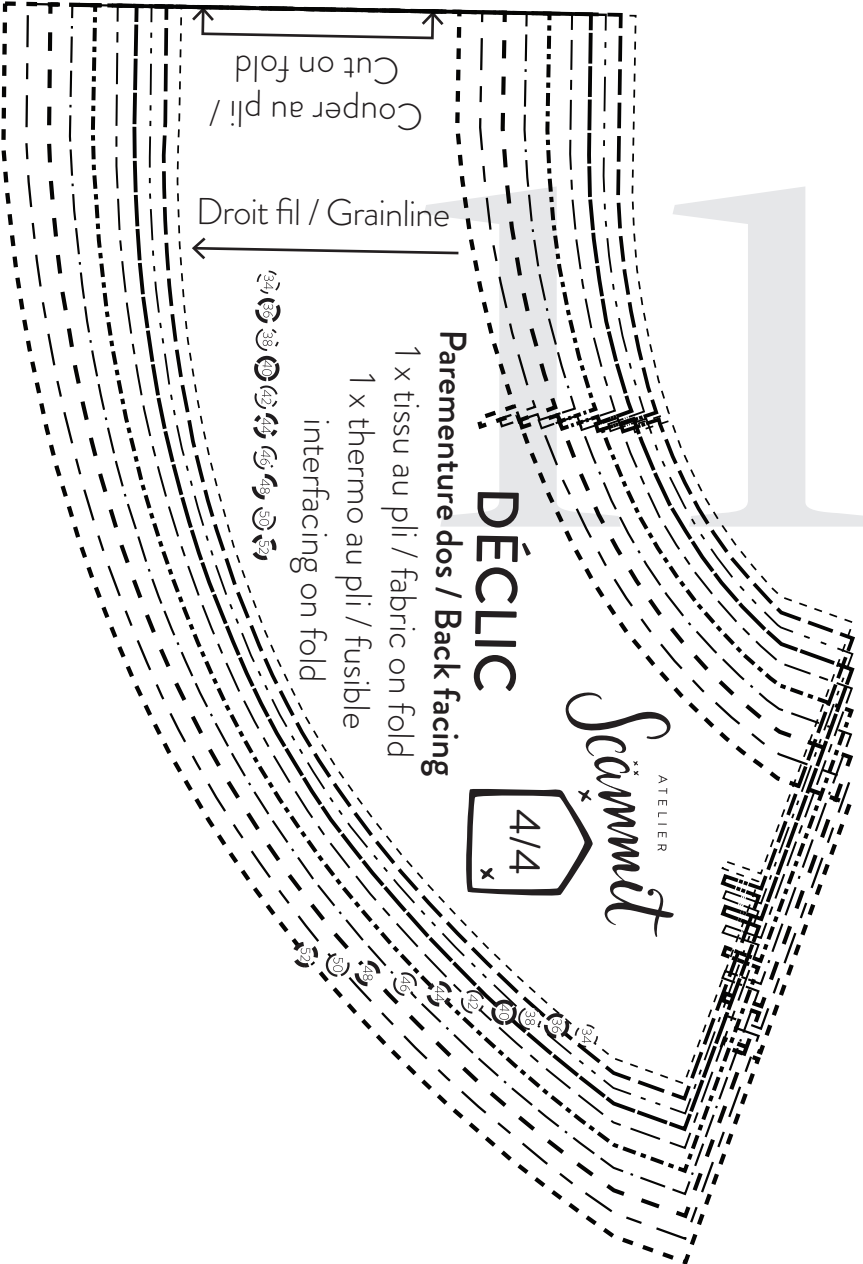
3D



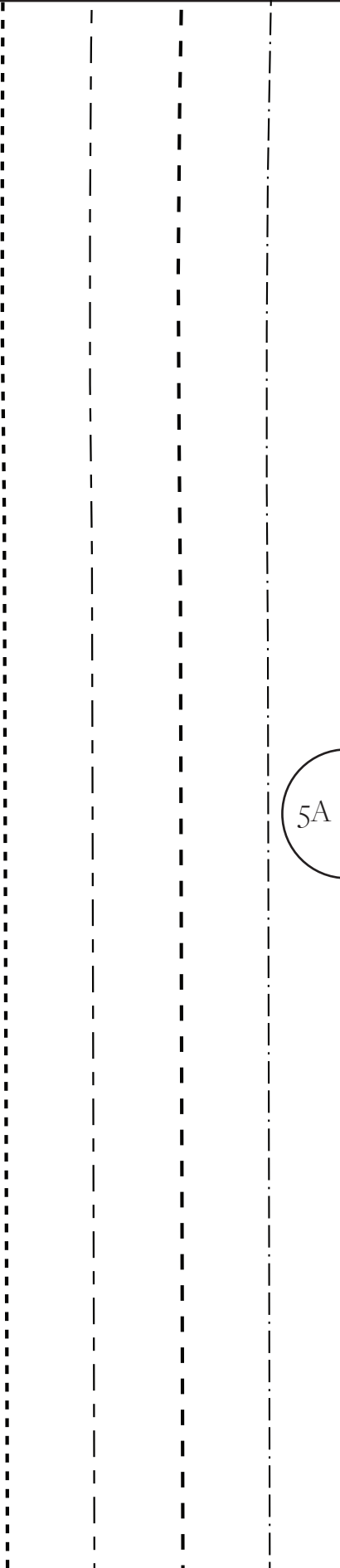
4E

4A

Couper au pli /  
Cut on fold



5A



4B

12

5B

5A



4C

34

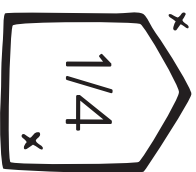
5B

13

5C

Droit fil / Gra

Couper au pli / Cut on fold



4D

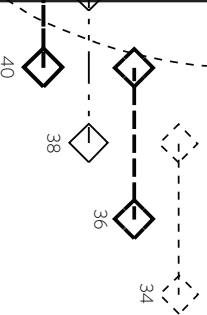
5D

# DÉCLIC

## Devant / Front

1 x tissu au pli / fabric on fold

- (34)
- (36)
- (38)
- (40)
- (42)
- (44)
- (46)
- (48)
- (50)
- (52)

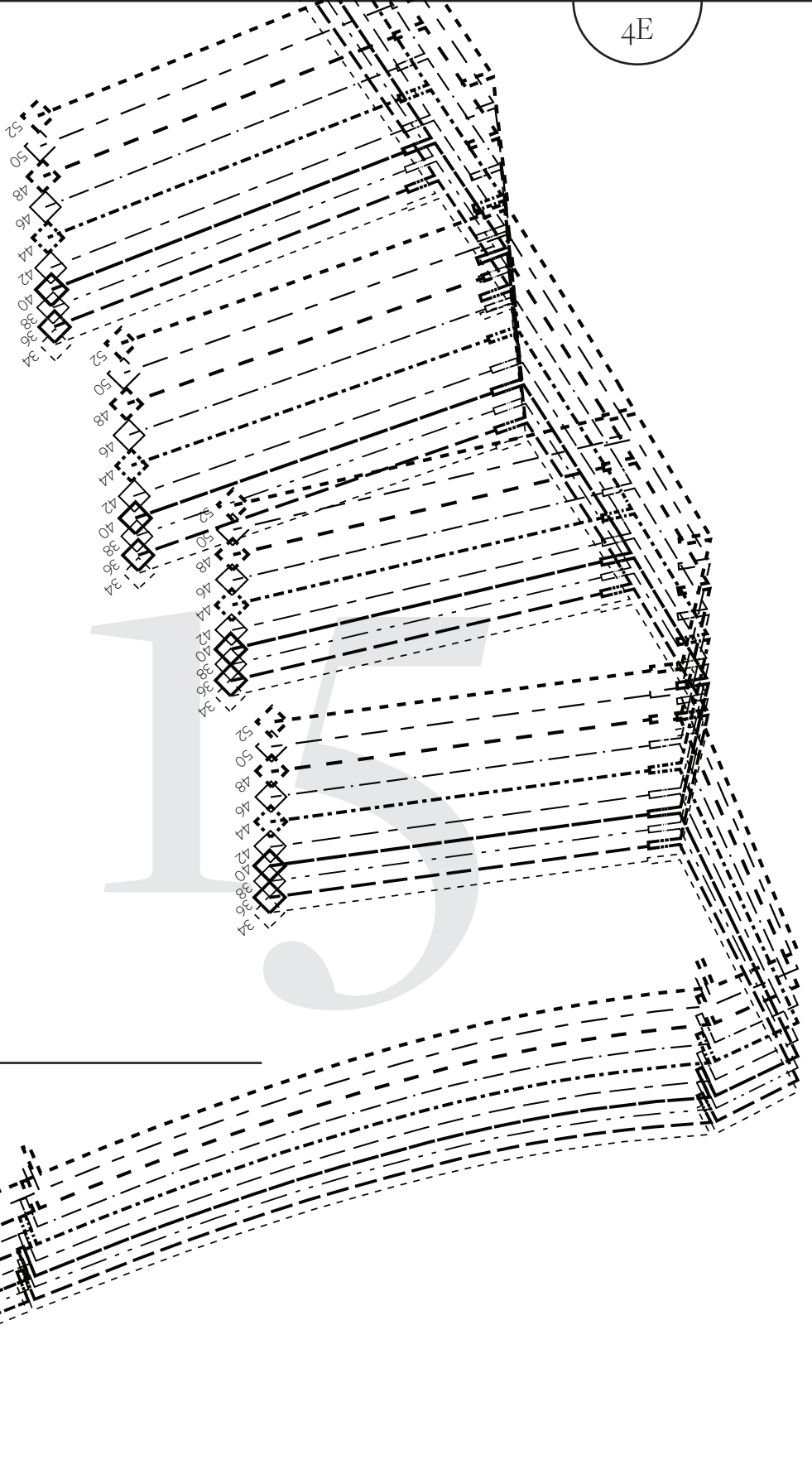


5C

ainline



4E



5D